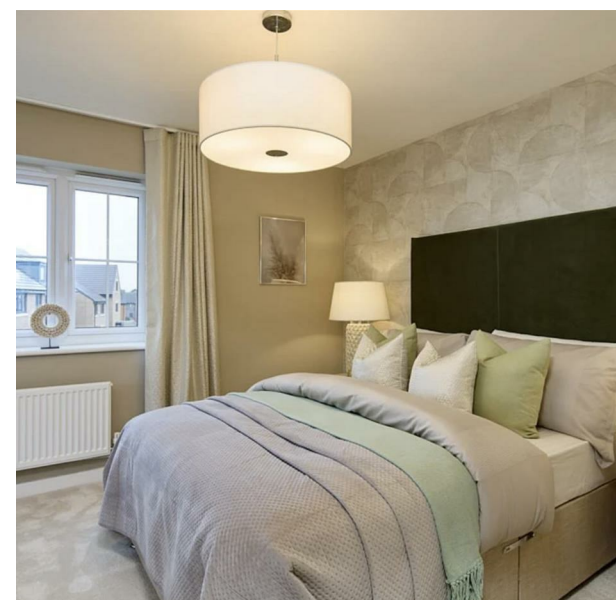


Eagle Drive, 18 Eagle Drive, Salford, Manchester, Greater Manchester, M6 6EY

£350,000

Council Tax Band: New Build

ORLANDO REID
— MANCHESTER —



Welcome to this stunning three-bedroom property on Eagle Drive in Salford, offering an exceptional living experience that combines space, style, and convenience.

As you step inside, you'll be greeted by a spacious and bright living room, perfect for relaxing after a long day or entertaining guests. The adjacent dining room offers ample space for family meals or hosting dinner parties, and large patio doors lead out to a beautiful green space garden. This private outdoor area is ideal for enjoying warm evenings or a morning coffee, offering a seamless blend of indoor-outdoor living.

The property boasts three generously sized bedrooms, providing ample space for furniture and storage, perfect for couples, families, or housemates. The third bedroom is versatile and can be used as a guest room,

ORLANDO REID

MANCHESTER

St Johns Court 19b Quay Street, Manchester, M3 3HN
01616760099
manchester@orlandoreid.co.uk
<https://www.orlandoreid.co.uk/manchester/>

